

How to Use the Early Warning System Middle Grades and High School Tools to Keep Students On Track for Graduation

National High School Center

Facilitator: Mindee O’Cummings, Ph.D.

Presenters:

Matt Hauenstein

Michelle Perry

Laura Yerhot

December 7, 2011

Agenda

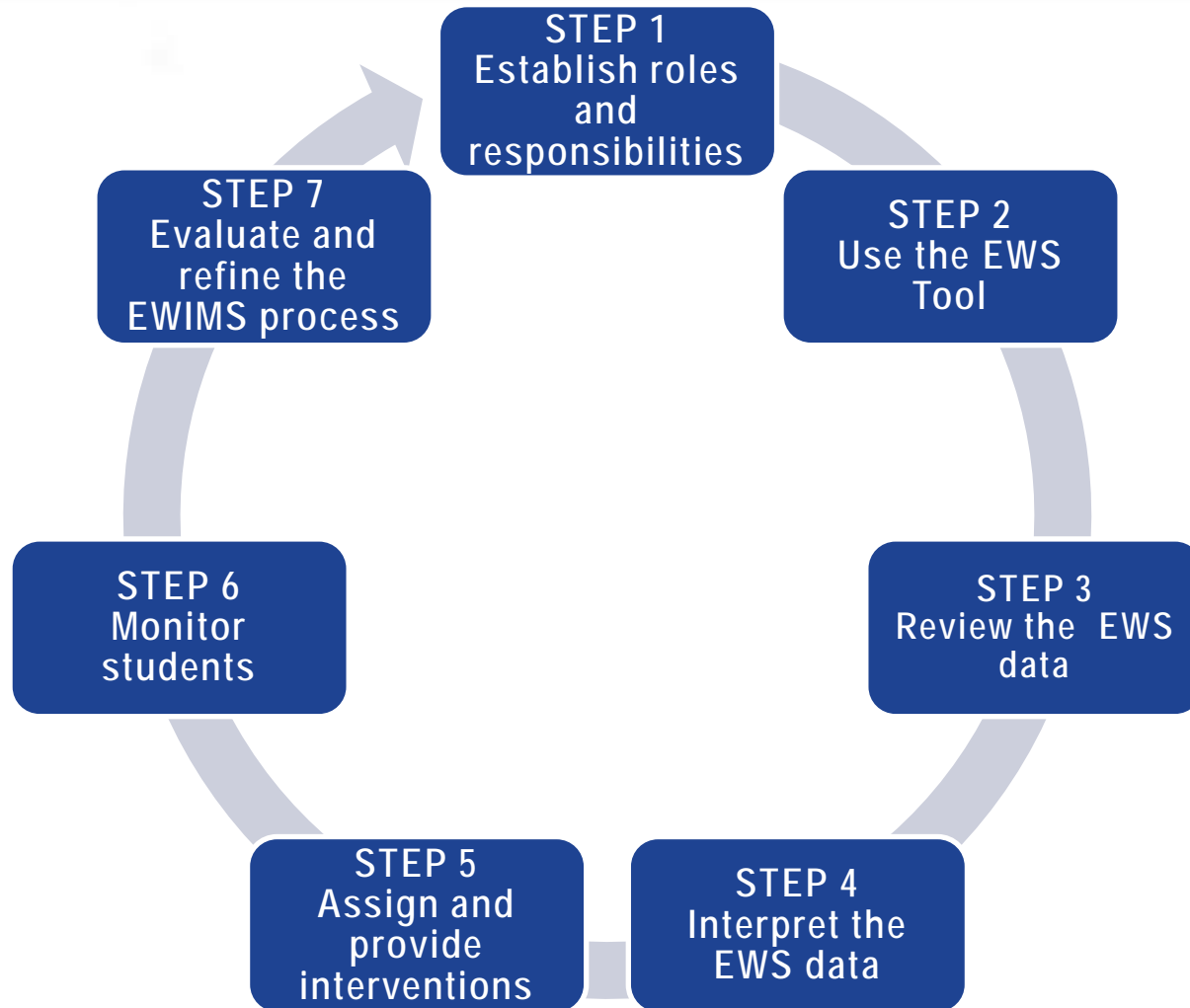
- Welcome
- Overview of the early warning system (EWS) background and research base
- EWS Middle Grades Tool Demonstration
- EWS High School Tool Demonstration
- Introduction to the EWS Community of Practice
- Q&A

Early Warning Systems

Early warning systems (EWS) rely on readily available data housed at the school to:

- Predict which students are at-risk for dropping out of high school
- Target resources to support off-track students while they are still in school, before they drop out
- Examine patterns and identify school climate issues

EWIMS Seven-Step Implementation Process



Key EWS Indicators

Engagement

- Attendance/absenteeism

Course Performance

- Course grades
- Number of credits earned
- GPA

Behavior

- Suspensions
- Referrals

Research from several U.S. school districts provides a strong foundation for defining early warning signs that students might drop out, but local adaptation is key.

EWS Indicators: Middle Grades and High School Thresholds

Indicators	Thresholds	
	Middle Grades	High School
Incoming Indicator	Previous year EWS Tool exit indicator or locally validated indicators of risk	
Attendance	Missed 20% or more of instructional time	Missed 10% or more of instructional time
Course Performance	Failure in an English language arts or mathematics course	Failure in one or more courses
		Earned 2.0 or lower GPA (on a 4-point scale)
Behavior	Locally validated thresholds	
End of Year Indicator	EWS exit indicator or locally validated indicators of risk	

EWS Tool Features

Features	Middle Grades	High School
Customize the tool settings to reflect the local context	New	X
Integrate locally validated incoming indicators	New	New
Modify the benchmarks/thresholds	New	X
Identify at-risk students based on a locally defined behavior indicator	New	New
Identify at-risk students based on a kindergarten cut-off date	New	--
Import and export student-level data	New	Enhanced
Group students with a customizable cohort variable	New	New
Assign and monitor student interventions over time	New	X
Produce reports including student- and school-level data summaries	New	X

EWS Middle Grades and High School Tools Demonstration

Presenters

Matt Hauenstein

and

Michelle Perry

Introduction to the EWS Community of Practice

Presenter

Laura Yerhot

Early Warning Systems Community of Practice

- Launching today, December 7th!!!
- Online community for EWS practitioners and interested parties
- Participate in interactive:
 - Discussions surrounding EWS technical and implementation
 - Blogs
 - Documents and Resources
 - Polls to see how others use EWS technology or implementation
 - Events related to EWS

Join the EWS CoP!

- <http://community.betterhighschools.org/>
 - Complete the “Join and Learn More” form.
 - Receive an email containing your password from nhsccommunity@air.org
 - Click the Early Warning Systems group on the community home page and then click “Join”
- Questions or comments: EWS@betterhighschools.org

- **Upcoming EWS Webinar**
 - **December 14, 2011, 3–4pm ET**
Stories from the Field: Putting EWS into Practice
- **Online EWS Community of Practice**
- **EWS products, tools and more:**
 - <http://www.betterhighschools.org/ews.asp>
- **Additional questions, email us at**
EWS@betterhighschools.org

Questions?

For more information on the National High School Center,
please visit us online at
www.betterhighschools.org

Follow us on Twitter @NHSCatAIR
Become our Fan on Facebook